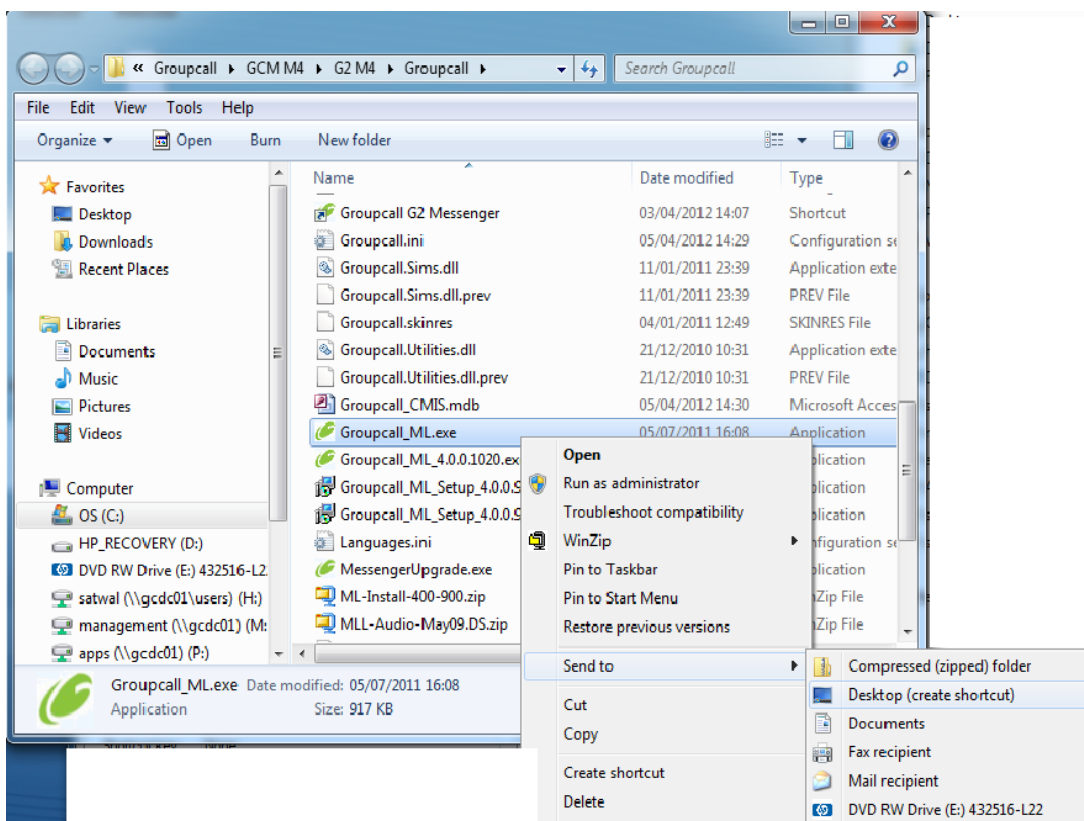


INSTALLING GROUPCALL MESSENGER ON ADDITIONAL PC's FOR Integris G2

Please note there is no Groupcall Messenger client installation required.

The Application file can be launched from the original installed Groupcall Folder on your shared MIS APPs server.

- 1) Browse to the Groupcall installation folder on your network look for the file named **Groupcall_ML.exe**
- 2) Select, Right Click mouse and 'Send to Desktop'
- 3) Note you will have to be on the Client PC on which you wish to place the Groupcall Messenger on.



- 4) On launching the Groupcall icon from the desktop;

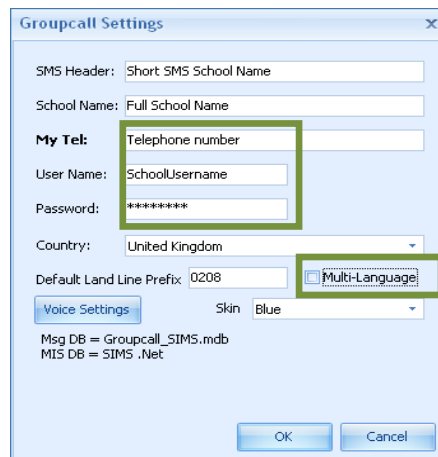


You may need to 'Run as administrator' for the first run only.

User can then use Groupcall as generic user. This step does not need to be repeated.

First Run

1. Open Groupcall Messenger by double clicking on the icon on your desktop
2. Messenger may report that there are some settings missing. Click "OK" to display this form



The screenshot shows the 'Groupcall Settings' dialog box with the following fields and options:

- SMS Header: Short SMS School Name
- School Name: Full School Name
- My Tel: Telephone number (highlighted with a green box)
- User Name: SchoolUsername
- Password: *****
- Country: United Kingdom
- Default Land Line Prefix: 0208
- Multi-Language: (highlighted with a green box)
- Skin: Blue
- Msg DB = Groupcall_SIMS.mdb
- MIS DB = SIMS .Net
- Buttons: OK, Cancel

3. Enter the **Username** and **Password** issued to you from Groupcall
4. (if you have forgotten this then you can call (0208 502 7344) and after answering a couple of security questions you will be issued with the credentials) NOTE: without these details Messenger will not operate.
5. Enter the **school telephone number** if it is not displayed and if you have requested a subscription to Groupcall Voice Messages, tick the "Multi-Language" box
6. Click "OK"

7. You will now have the opportunity to log onto Groupcall Messenger



The screenshot shows a dialog box titled "Groupcall G2 Login" with a close button (X) in the top right corner. The dialog contains a section titled "G2 Login Details" with the following fields: "LA Code" and "Estab No" (both with small input boxes), "Username" (with a larger input box), "Password" (with a larger input box), a checkbox labeled "Remember Password", and "Server" (with a larger input box). At the bottom of the dialog are two buttons: "Login" and "Cancel".

8. Enter your

LA code: (Local Authority 3 digit number),

Estab No: (establishment number, 4 digit number)

G2 Username:

G2 Password:

Server: (you can get this formation from RM, or contact Groupcall, 0208 502 7344)

(NOTE: you will only need to enter the above details the once, also you will need to have 'Web Services' enabled within your schools G2 system)

9. Click OK

Groupcall messenger setup is now complete!