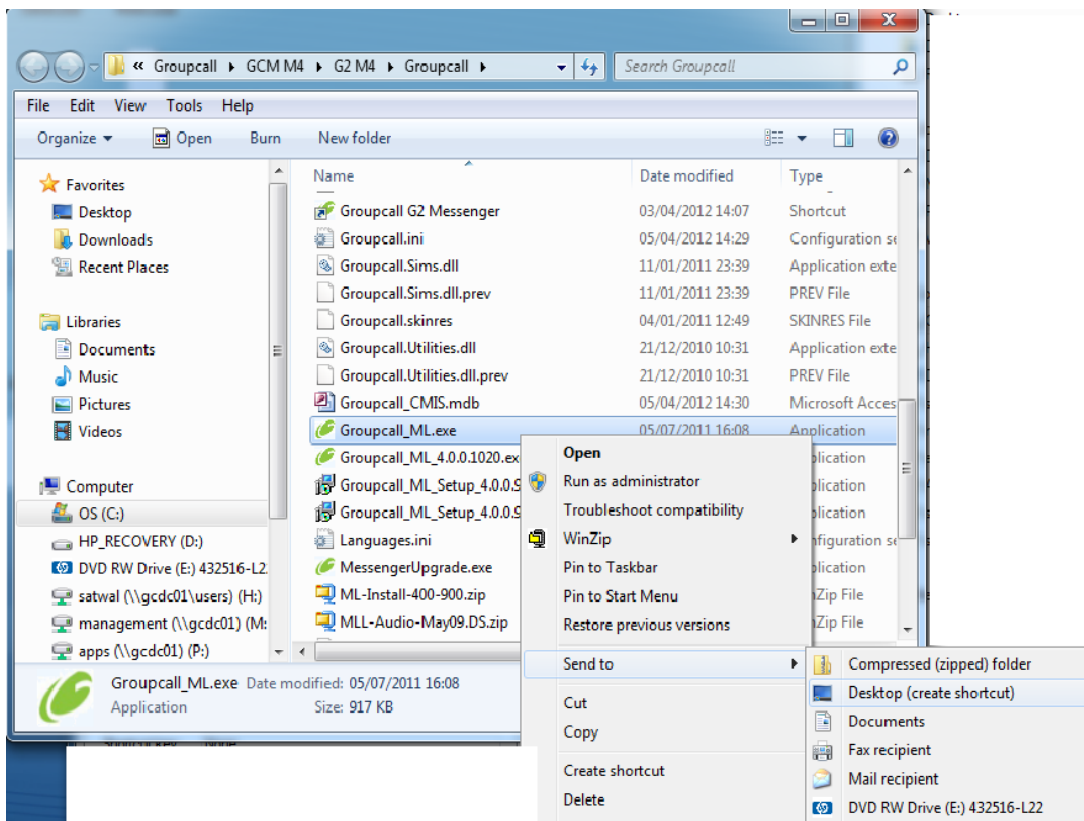


INSTALLING GROUPCALL MESSENGER ON ADDITIONAL PC's FOR - E1

Please note there is no Groupcall Messenger client installation required.

The Application file can be launched from the original installed Groupcall Folder on your shared MIS APPs server.

- 1) Browse to the Groupcall installation folder on your network look for the file named **Groupcall_ML.exe**
- 2) Select, Right Click mouse and 'Send to Desktop'
- 3) Note you will have to be on the Client PC on which you wish to place the Groupcall Messenger on.



- 4) On launching the Groupcall icon from the desktop;

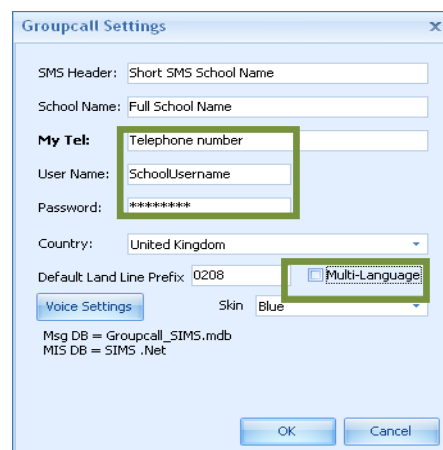


You may need to 'Run as administrator' for the first run only.

User can then use Groupcall as generic user. This step does not need to be repeated.

First Run

1. Open Groupcall Messenger by double clicking on the icon on your desktop.
2. Messenger may report that there are some settings missing. Click "OK" to display this form

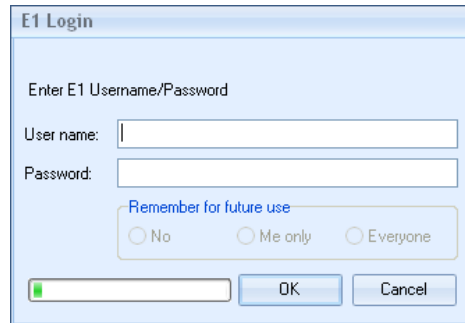


The image shows the 'Groupcall Settings' dialog box. It contains the following fields and options:

- SMS Header: Short SMS School Name
- School Name: Full School Name
- My Tel: Telephone number
- User Name: SchoolUsername
- Password: *****
- Country: United Kingdom
- Default Land Line Prefix: 0208
- Multi-Language:
- Voice Settings button
- Skin: Blue
- Msg DB = Groupcall_SIMS.mdb
- MIS DB = SIMS .Net
- OK and Cancel buttons

3. Enter the **Username** and **Password** issued to you from Groupcall
(if you have forgotten this then you can call (0208 502 7344) and after answering a couple of security questions you will be issued with the credentials)
NOTE: without these details Messenger will not operate.
4. Enter the **school telephone number** if it is not displayed and if you have requested a subscription to Groupcall Voice Messages, tick the "Multi-Language" box
5. Click "OK"

6. You will now have the opportunity to log onto Groupcall Messenger



The image shows a dialog box titled "E1 Login". It contains the following elements:

- A label "Enter E1 Username/Password"
- A "User name:" label followed by a text input field.
- A "Password:" label followed by a text input field.
- A "Remember for future use" section with three radio buttons: "No", "Me only", and "Everyone".
- A progress indicator (a small green bar) and a "Cancel" button at the bottom left.
- "OK" and "Cancel" buttons at the bottom right.

7. Enter the [E1 Username and Password](#) issued by Pearsons E1

8.

NOTE: the u/p will be specifically created and issued to you by Pearsons to use with Groupcall Messenger, it is not the same u/p you would generally use to login to E1 with.)

9. Click OK and Messenger will try connecting to your E1 system and read the data. Once the data has been successfully read by messenger you will be ready to send messages.

Groupcall messenger setup is now complete!