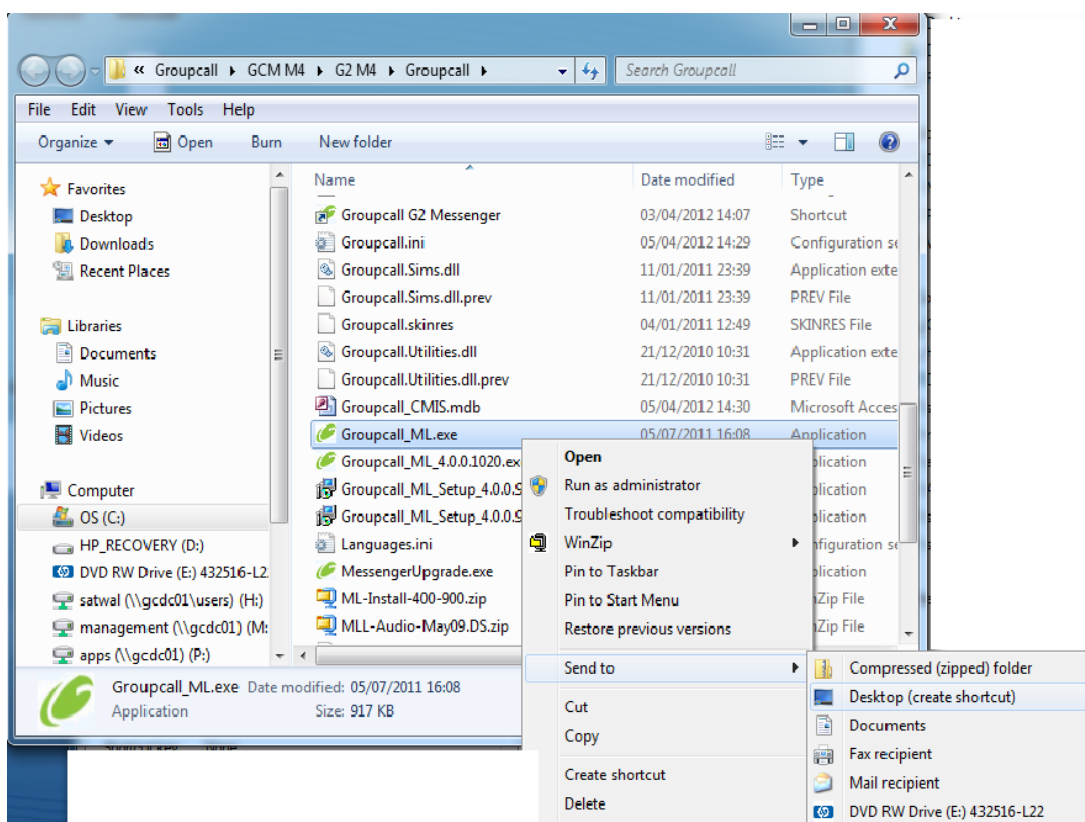


INSTALLING GROUPCALL MESSENGER ON ADDITIONAL PC's FOR CMIS

Please note there is no Groupcall Messenger client installation required.


The Application file can be launched from the original installed Groupcall Folder on your shared MIS (CMIS) server.

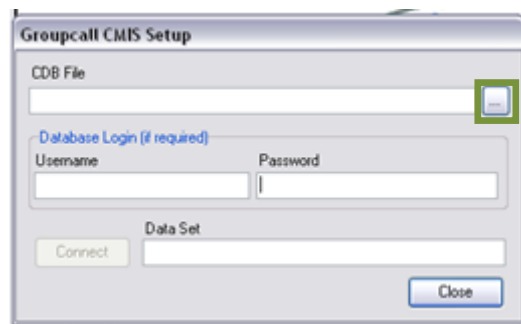
- 1) Browse to the Groupcall installation folder on your network look for the file named **Groupcall_ML.exe**
- 2) Select, Right Click mouse and 'Send to Desktop'
- 3) Note you will have to be on the Client PC on which you wish to place the Groupcall Messenger on.



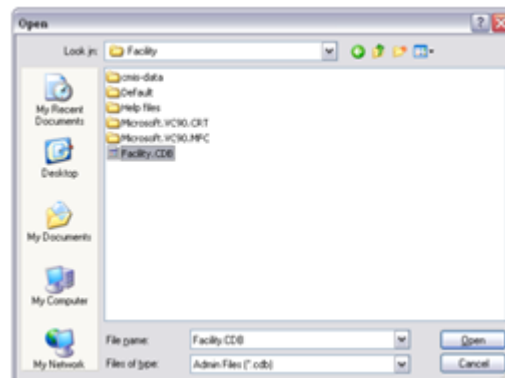
- 4) On launching the Groupcall icon from the desktop;



- 5) You will now be required to enter the details below. By clicking on the button  below locate your 'Facility.cdb' file



- 6) For example:



- 7) Enter the **Username** and **Password**
- 8) Select the Data Set i.e. 2011/2012 for your academic
- 9) Click on '**Connect**' and then Close
- 10) You will now be ready to use Groupcall Messenger

Note the username and password is the SQL server admin account and will only be required on initial launching of the application.

The users do not have to repeat this step as the system will remember it for future.

Groupcall CMS Setup

CDB File
C:\APPS\Facility\Facility.CDB

[Database Login \(if required\)](#)

Username STUD_ADMIN	Password stud_admin
------------------------	------------------------

Connect Data Set

Close