



Groupcall Messenger: E1 Installation Guide

Preparation Steps

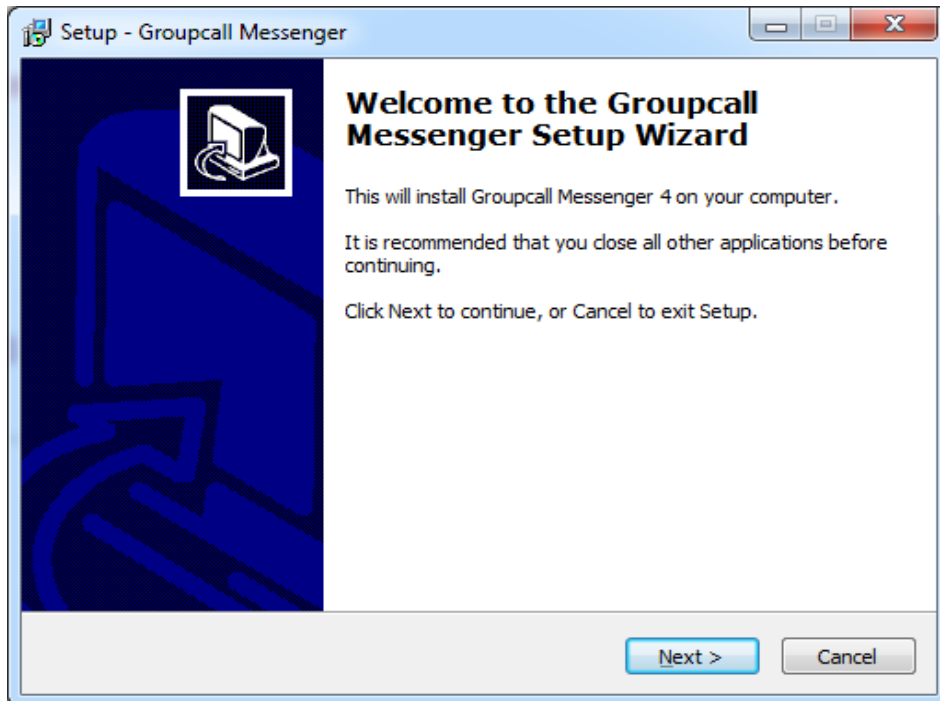
1. Create a folder for Groupcall on a shared network drive:
 - For example: S:\Groupcall
2. Go to the Groupcall downloads website:
 - www.groupcall.com/download
3. Under the heading Messenger M4 Downloads [ML v4.0.0] right click and 'save target as' the following file to your new Groupcall folder:
 - **Integrated MIS Application Download (Installer) - M4 Full Install Download 4...***]**
4. Under the heading Groupcall Messenger Downloads [ML v3.8.0] right click and 'save target as' the following file to your new Groupcall folder:
 - **Messenger Documentation [M4]**
5. ****Voice Subscription Only**** Under the heading Groupcall Messenger Language Libraries right mouse click and 'save target as' to the Groupcall folder:
 - **Multi-Language-Library Download [English Female]**

Installation Steps – Messenger 4

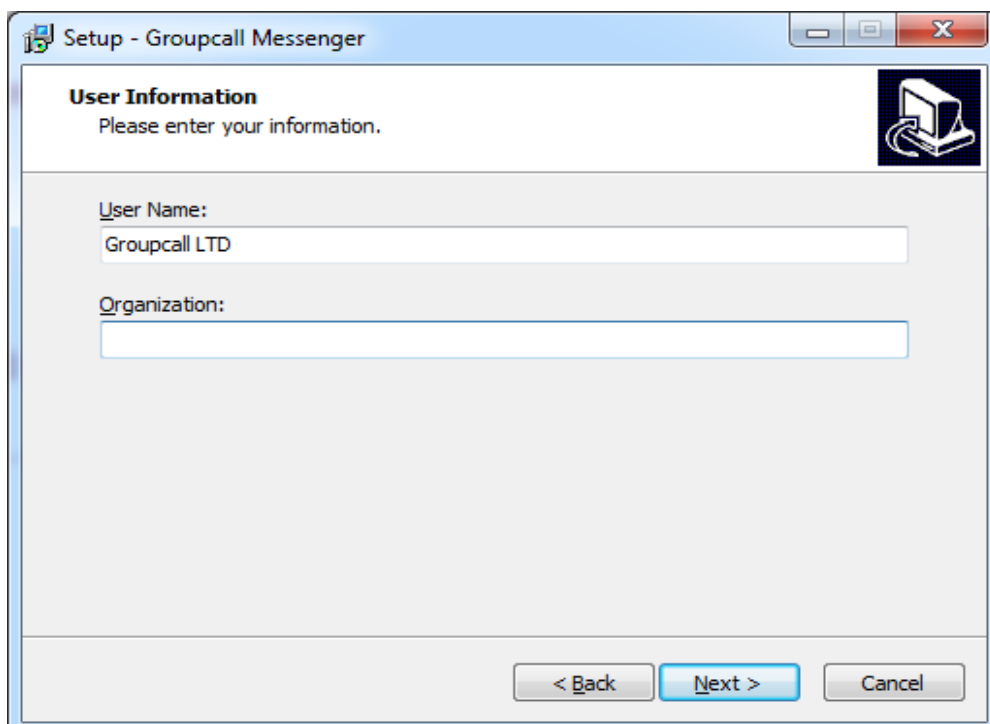
1. Double click the Groupcall_ML_Setup_4.0.0.*** file to begin the installation and click **Run** if prompted:



2. Click Next

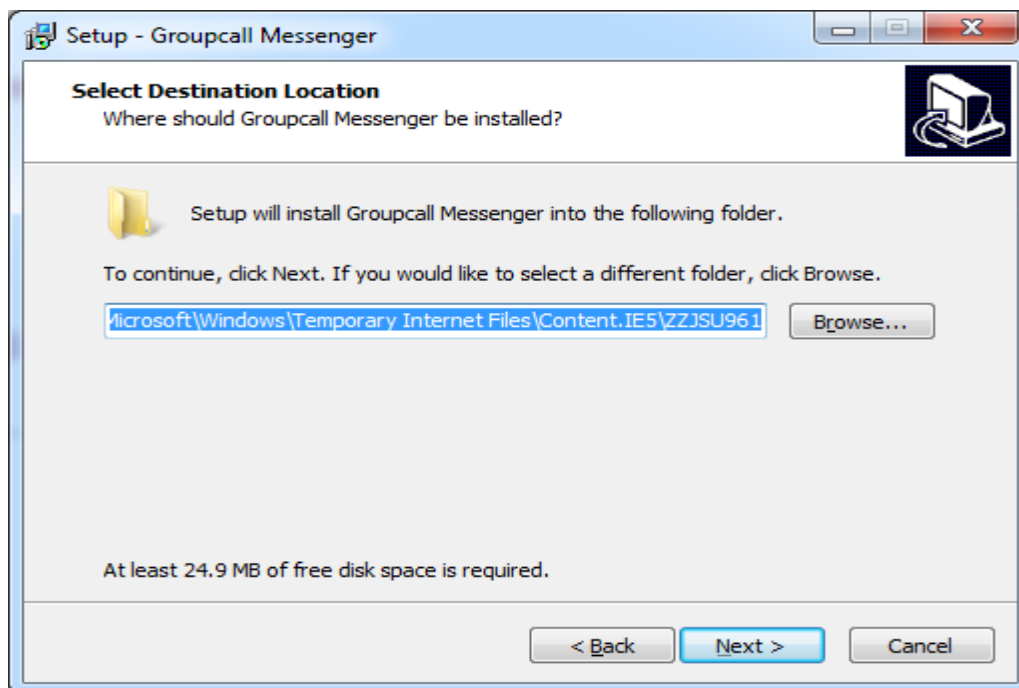


3. Enter the School Name into the username Field and remove any text from the Organisation field

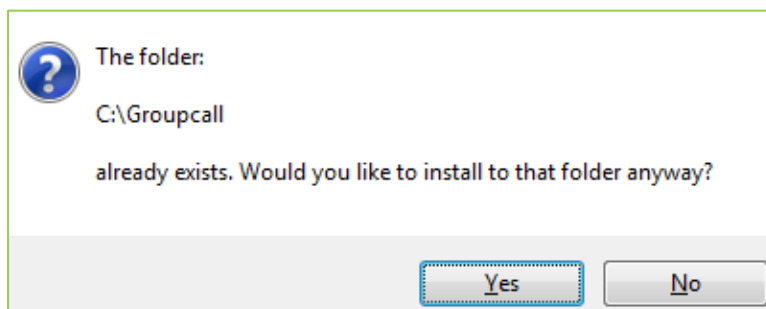




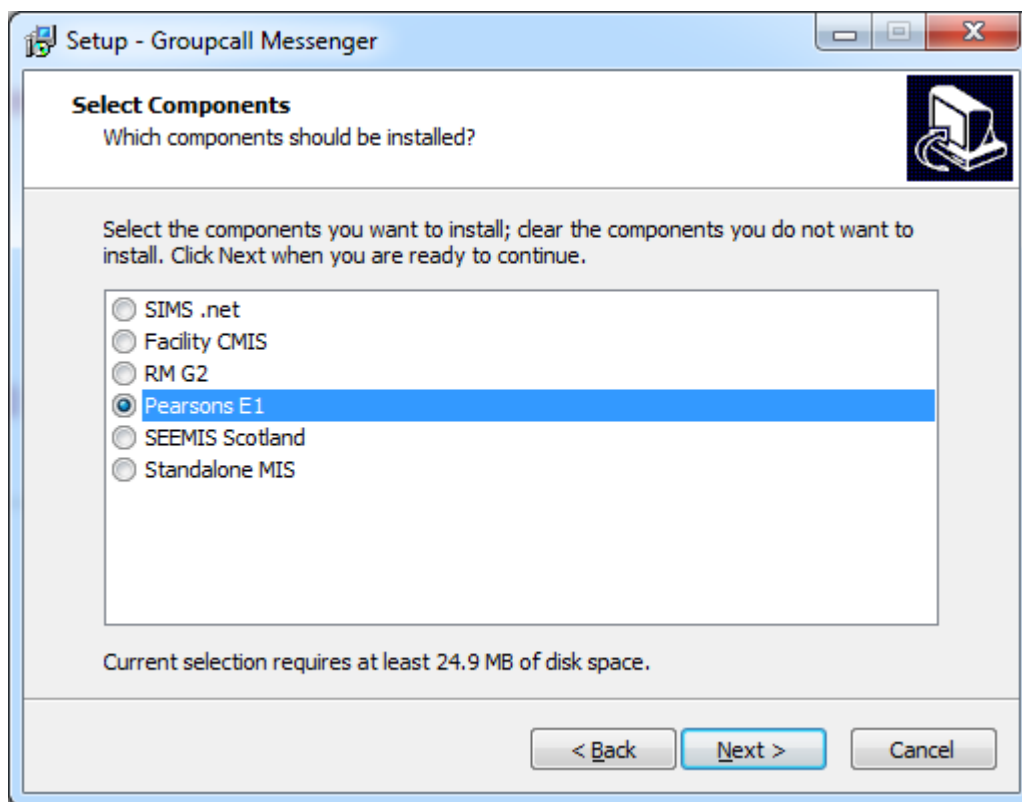
4. If you downloaded the setup file to your new Groupcall folder, it should select this as the default place to install. If not, click **Browse** and select your newly created Groupcall folder:



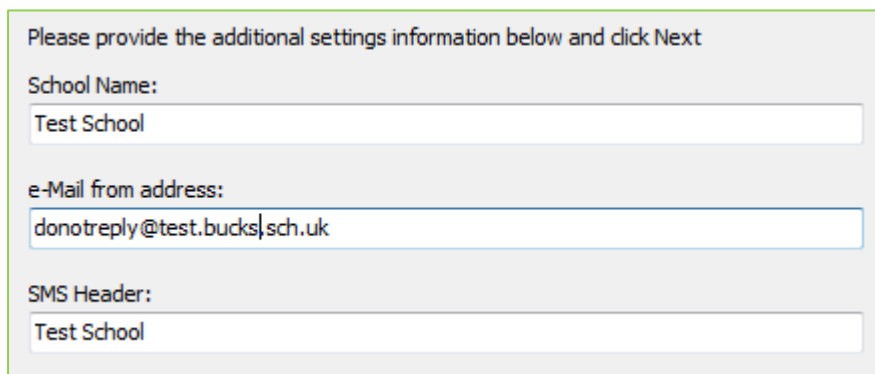
5. You will be prompted that the folder already exists, click **Yes**:



6. Choose your school's MIS system, then click **Next**:



7. Enter your School Name, a school email address
(use donotreply@yourschooldomain)
if you do not want people to be able to reply to emails you send out
e.g. donotreply@stjohns.bucks.sch.uk)
8. Enter your default SMS header. This will appear at the beginning of every text message you send. It also counts towards your 160 character limit per text unit. Click **Next**:

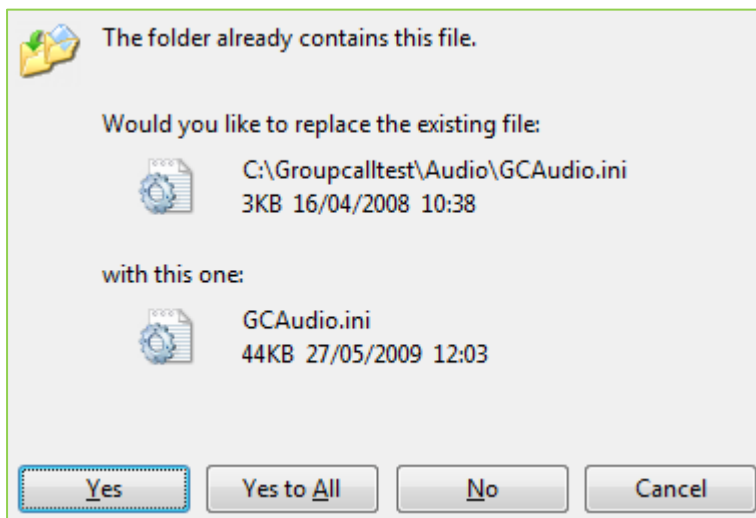


9. View the summary and click **Install**
10. Click **OK** to dismiss a message about Messenger restarting if it appears.

Installation Steps – Voice

If you have purchased a Voice subscription we now need to install the audio files

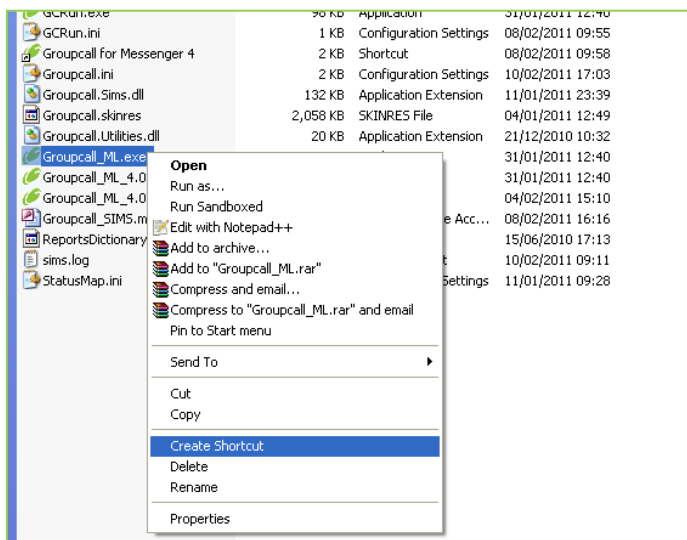
1. In your Groupcall installation folder find the file **MLL-Audio-May09.PW.zip** and extract it directly into the folder (i.e. not into **Groupcall\MLL-Audio-May09.PW**)
2. If extracted to the right location, you will be prompted to overwrite the Audio folder and other files. Confirm you wish to **replace** the existing files by clicking **Yes to All**:



Installation Steps – Creating a Shortcut

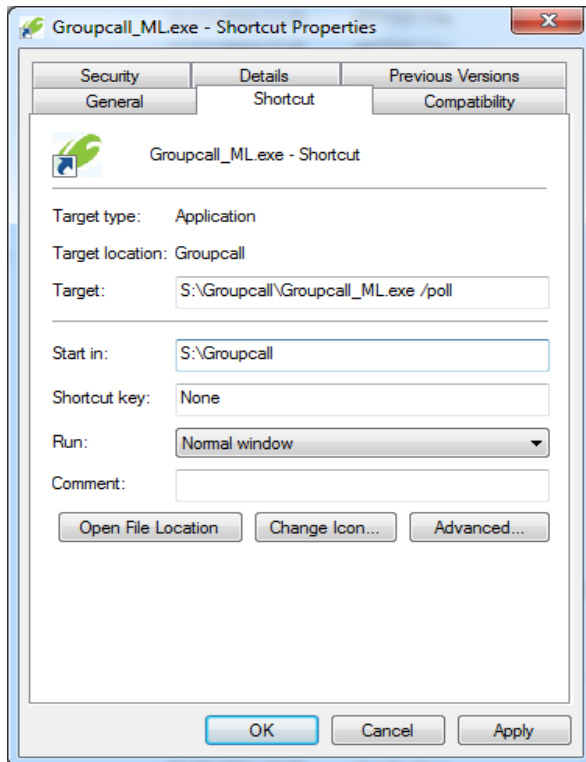
The installation will create a shortcut on your desktop automatically but we need to add extra functionality.

1. On your desktop find the Groupcall Messenger icon and delete it.
2. In your Groupcall installation folder find the **Groupcall_ML.exe** application file
3. Right click on the **Groupcall_ML.exe** and select create shortcut:



4. Right click on this shortcut just created, it will be labelled **Groupcall_ML.exe - Shortcut**
5. Select **Properties**
6. Under the Shortcut Tab click in the “**Target**” text area of the dialogue box

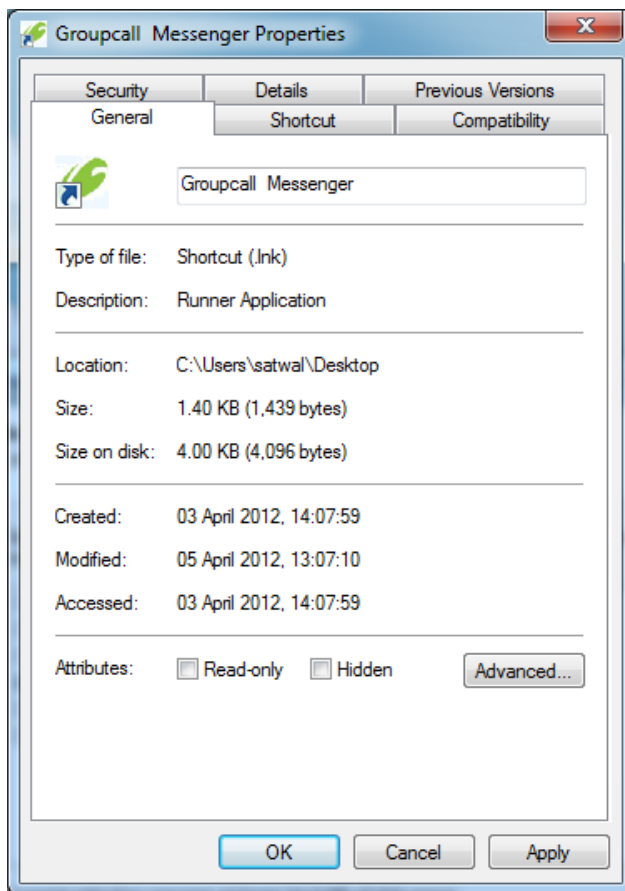
7. At the end of the long string of text, enter a space and add the characters `/poll` as shown



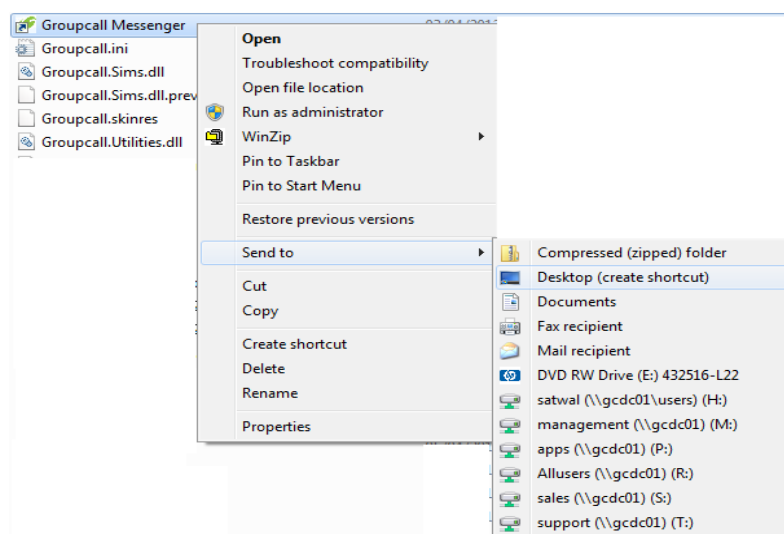
8. The contents of this text area should now look similar to this (see above image)

`"S:\Groupcall\Groupcall_ML.exe" /poll`

9. Click on the "General Tab"
10. Rename the Shortcut to Groupcall_ML.exe to **Groupcall Messenger**



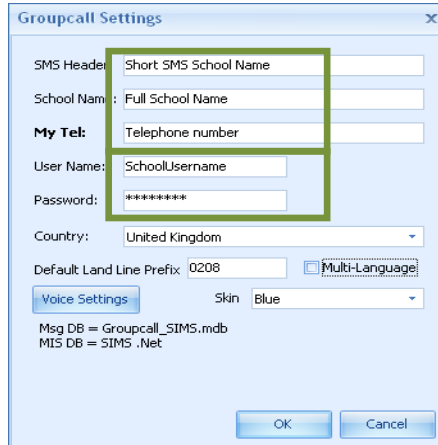
Installation Steps – Placing Messenger Icon on Client Machines On the Client machines where you would like to use Groupcall Messenger, browse to the Groupcall installation folder on your network and right click on the shortcut created above, select **Send To Desktop (create shortcut)**



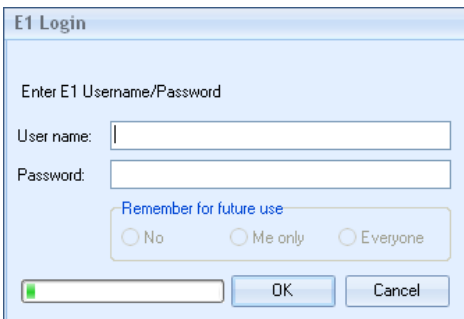
You only need repeat this step on the computers that you want Messenger to be available on.

Groupcall Messenger - First Run

1. Open Groupcall Messenger by double clicking the shortcut on your desktop.
2. Messenger may report that there are some settings missing. Click “OK” to display this form:



3. Enter the **Username** and **Password** issued to you from Groupcall (if you have forgotten this then you can call (0208 502 7344). We will ask a couple of security questions you will be issued with the credentials) NOTE: without these details Messenger will not operate.
4. Enter the **school telephone number** and **land line prefix** if it is not displayed
5. If you have requested a subscription to Groupcall Voice Messages, tick the “**Multi-Language**” box
6. Click “OK”
7. Messenger will now ask for your **E1 Username and Password** issued by Pearsons E1



(NOTE: the u/p will be specifically created by Pearsons to use with Groupcall Messenger, it is not the same u/p you would generally use to login to E1 with.)

8. Click OK and Messenger will try to connect to your E1 system and read the data. Once the data has been successfully read by Messenger you will be ready to send messages.

Groupcall Messenger setup is now complete!