



Tel:
020 8502 7344

Fax:
020 3328 4601

Email:
emerge.support@groupcall.com

Website:
www.groupcall.co.uk

Emerge 2.0 - Release Note

Spring 2011

NEW FEATURES

Lesson Cover

With Emerge V2.0 you now have the capability to take attendance for any class/subject in the school timetable. This extends the capability in previous versions of Emerge so that supply/cover can take attendance in classes on any Emerge device providing the user has the required privileges to do so (see 'Multiple Profiles below).

Group Registration

Emerge has also been extended to allow attendance to be taken for any SIMS group. This includes classes, lessons, year groups, houses, school trips...in fact any bespoke group set up in SIMS.



Multiple Profiles

This release of Emerge brings a range of new user profiles to further control what information is available to different types of Emerge user. The table below provides details for each profile.

Profile	Capability
Admin (Senior Leadership Team)	<ul style="list-style-type: none"> → View all Student information → View all Staff information → Send SMSs (Messenger required) → Take attendance for own timetable → Take attendance for other teachers/lessons
Teacher	<ul style="list-style-type: none"> → View all Student information → View limited staff information (no personal contact details) → Take attendance for own timetable → Take attendance for other teachers/lessons → Send SMS messages (Messenger required)
Teacher (No Messaging)	<ul style="list-style-type: none"> → View all Student information → View limited staff information (no personal contact details) → Take attendance for own timetable → Take attendance for other teachers/lessons → Cannot send SMS messages (Messenger required)
Supply Teacher	<ul style="list-style-type: none"> → View all Student information → View limited staff information (no personal contact details) → Take attendance for other teachers/lessons → Cannot send SMS messages (Messenger required)

Disabled (remote wipe) → No access to any data – databases remotely wiped



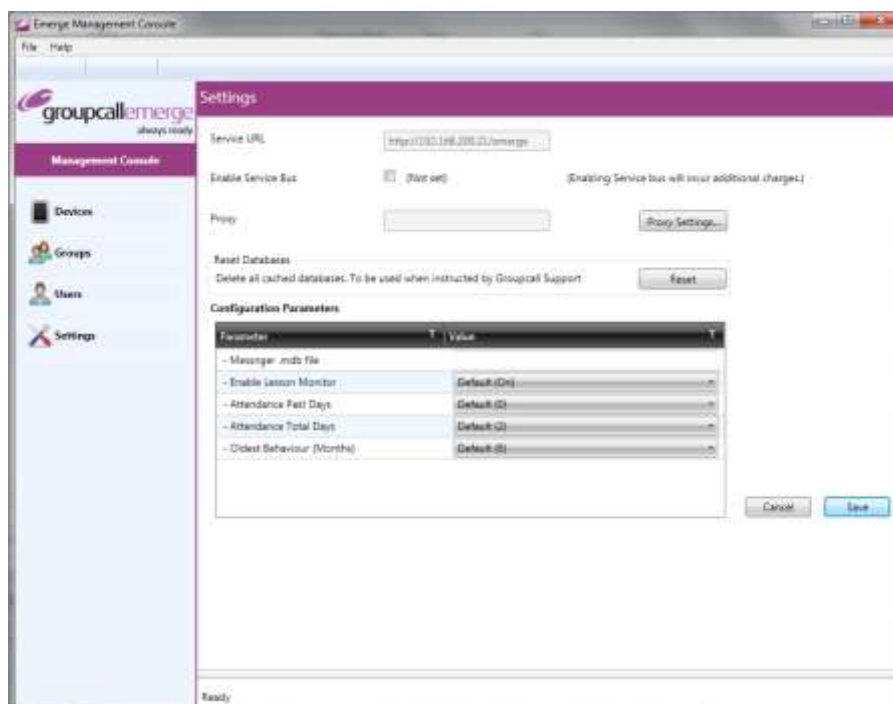
Weekly Timetable View for Staff and Students

The new timetable list view provides the ability to scroll through an entire timetable, be that a single or two week timetable, in one convenient place.

Emerge Management Console Updates

A whole host of updates have been added to the Emerge Management Console to make it easier to configure and manage Emerge. Updates include

- ✓ Automatic extraction of staff profiles from SIMS linked to user profiles
- ✓ One-click enabling of the Service Bus (provides access to Emerge over 3g phone networks).
- ✓ Simple Groupcall Messenger SMS integration
- ✓ Simplified proxy configurations
- ✓ One-click remote wipe/disable users

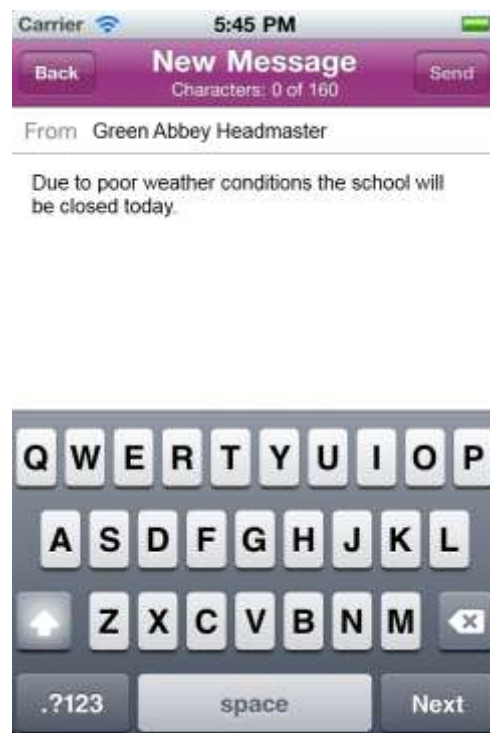


Installation Refinements

Not only has the Emerge Management Console been greatly extended, we've also made great strides with the Emerge installer to greatly simplify the installation process. By closely analysing the process for installing previous versions of Emerge, we've streamlined the process to massively reduce the time and complexity required for an installation.

Messenger Integration

Groupcall are proud to announce that, in this release of Emerge, we have integrated the hugely popular messaging system, Groupcall Messenger. If Emerge users also have Messenger installed in their school, they are able to send SMS messages to parental contacts directly from Emerge whether in school or out and about. With just a few button presses Emerge users are able to send messages to any groups of students available in SIMS including the parental contacts/carers for all students, individual students, all staff, year groups, school trips, classes, house groups and many more...



ENHANCEMENTS

Remote Wipe

In the event of a lost or stolen device, the remote wipe has been included in the management console to provide an easier mechanism for remotely wiping encrypted databases (student information) from Emerge.

Updated Web Service

Groupcall have made a number of significant changes to the way that it provides connectivity over 3g to make it faster and more robust.

Cancel Button When Syncing

Tired of waiting for information to download when all you want to do is take attendance? We've added a 'Cancel' button to allow you get past the updates and use Emerge when you need it.

The 'X' Mark

By popular request we've added 'X' to the list of available attendance codes for 'un-timetabled sessions of non-compulsory school-age pupils'.

Case Sensitive Usernames

Usernames are no long case sensitive